

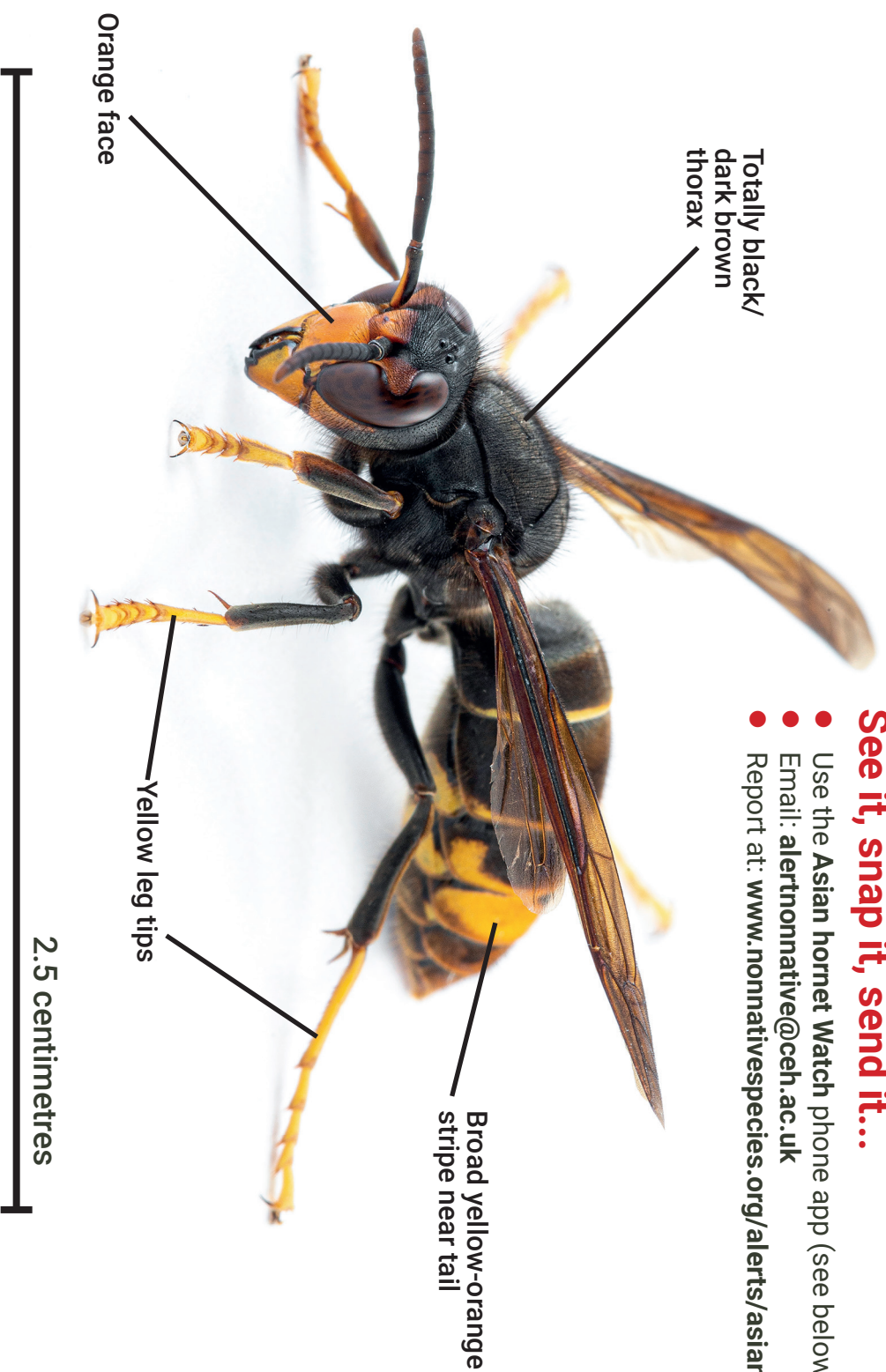


Report yellow-legged Asian hornets and save our bees!

The UK is on high alert for yellow-legged Asian hornets – they kill pollinators!

See it, snap it, send it...

- Use the Asian hornet Watch phone app (see below)
- Email: alernonnative@ceh.ac.uk
- Report at: www.nonnativespecies.org/alerts/asianhornet



How to spot a nest



MARCH/APRIL

Queen hornets leave hibernation and build tennis ball-sized **embryo nests** in sheltered spots like barns, sheds, garages and under eaves. The queen, seen above behind the first few cells of her nest, has lots more work to do.



MAY/JUNE

Nests are enlarged to football-sized **primary nests** to accommodate the growing hornet population.



JULY to OCTOBER

Workers build a large (~20–60cm), **secondary nest** often high up in a tree canopy, or in brambles, hedges or buildings. Look for hornets feeding on flowers, fallen fruit and hunting insects.

Don't confuse Asian hornets with other insects



Asian Hornet
Vespa velutina

European Hornet
Vespa crabro

Wasp
Vespula vulgaris

Honey Bee
Apis mellifera

Report through the Asian Hornet Watch app or www.bit.ly/asianhornetreport



Photos: We are grateful to John Le Carteret (embryo and primary nests); Claude Alleva/Pixabay (secondary nest). The Animal and Plant Health Agency, Crown Copyright (chart above) for kindly permitting us to use their photographs.