

The stations covered by the East Hampshire Community Rail Partnership are served by regular train services in both directions, seven days a week.

Train Services:
South Western Railway

For train times along the route, you require: Timetable **17** Portsmouth and Haslemere to London Waterloo



Timetables are available from stations along the route, or for download in PDF form from the South Western Railway website www.southwesternrailway.com. The website also gives full details of each station including opening times and facilities.

Change trains at Havant Station to access other parts of the South Downs National Park, the south coast, and further afield.

Great Western Railway operate train services from **Havant Station** to Brighton, Salisbury, Bath, Bristol, Gloucester, Cheltenham, Worcester and Great Malvern.

Southern operate train services from **Havant Station** to Brighton, London Victoria, Gatwick Airport, East Croydon. Also to Southampton, Portsmouth, Chichester, Horsham and Worthing.

Travel Information: Trains

National Rail Enquiries: 03457 484950 www.nationalrail.co.uk

For next train departure information from your local station text the name (for example; LISS) to 84950

British Transport Police: 0800 405040

Train Operator Customer Services contacts:

South Western Railway: 0345 6000 650 www.southwesternrailway.com

Southern: 03451 27 29 20 www.southernrailway.com

Great Western Railway: 0345 7000 125 www.gwr.com

Travel Information: Buses

Traveline (bus and coach information): 0871 200 22 33 Text 84268 www.traveline.info

The following information is for guidance only; before travelling please check current timetables and routes with the relevant operator.

Buses calling at Liphook Station:

- **13/13X** to Basingstoke. Operated by Stagecoach.
- **250** Town centre service (Certain days only). This is a 'hail and ride' service which means it not only calls at bus stops, but can be 'hailed' or requested to stop at any safe location along the route. Operated by AMK Chauffeur Drive.
- **Liphook to Hollycombe Steam in the Country** bus link for special events.

Stations along the route



Liphook Station

The main station building (very similar to that at Rowlands Castle) dates back to the opening of the route in 1859. The coming of the railway stimulated economic activity in Liphook, but not to such an extent as other places along the route. The station once had a goods yard but this was closed in the 1960s. In its heyday the goods yard handled a considerable amount of military traffic - both personnel and equipment - owing to the number or army bases in the surrounding area. At the northern end of the station, trains pass under a very substantial triple-arched brick bridge which carries the Midhurst Road over the railway. Also at the bridge end, outside of the front of the station are bicycle racks available for use by passengers cycling to and from the station. All the stations along the route have cycle racks.



Liss Station

The station building at Liss is a striking, angular, modern design of glass and steel. It replaced the original brick-built structure, that had been suffering from severe settlement over the years, in 1974. Liss was the southern terminus of the famous Longmoor Military Railway, which closed in 1969, and this line was used for training Royal Engineers military personnel in the methods of operating railways. The skills they learned here in Hampshire were then used all around the world. During the Second World War, the railway played an important part in training soldiers, and also in the preparation of hundreds of steam locomotives destined for use by Allied forces in Europe during the final years of the war. Two claims to fame are that the railway here was used to shoot much of the 1965 film *The Great St. Trinian's Train Robbery*, and after the railway had closed, scenes for the 1972 film *Young Winston* were filmed. There were serious plans by the wildlife and railway artist David Shepherd, amongst others, to convert the line into a preserved steam railway, but this never happened and all the track was removed in 1972. Today, a section of the trackbed has been converted into a wooded footpath and bridleway, which forms part of the Shipwrights Way (See this leaflet's 'Walks Information'). There is a set of original buffer stops marking the start of the walk, to the left of the main station building. The original platform shelter still exists. Guides to local walks are available on the Liss Parish Council website.



Petersfield Station

The main station building at Petersfield was built in 1885. There is a large signal box which still stands next to the level crossing. It is now manned 24 hours a day with a 'Signaller' controlling the level crossing gates on the busy A272 road. The box is due to be closed as part of signalling upgrades along the line, however its future is secure as it obtained listed building status in 2013. There were once two goods yards at Petersfield, on either side of the main line. One closed in 1967 and the other in 1970. A branch line to Midhurst was opened in 1864. This started from a single platform located on the far side of the level crossing. This was to avoid the branch line train blocking the main line platforms, and reduce the number of times the gates had to be closed to road traffic. The Midhurst branch was closed in 1955, which was some years before the mass Beeching closures of railway lines in the 1960s.

Petersfield is one of the 'key gateways' to the South Downs National Park, and a fine view of the hills can be seen from the station looking south.

For more information about the South Downs see overleaf.

The Hub Information Office

The Partnership's 'Hub' at Petersfield Station provides all travel and tourism information for the town and surrounding area during the summer.

The Hub is located at Petersfield Station in what was the old parcels office. Once locked and redundant, the refurbished space has been leased and it is now used as an information and tourism facility during the summer. More recently it has been used to host our 'Free Shop Friday' events. The major food retailers in the town including Waitrose, Marks & Spencer and Tesco donate out of date but edible food items through the charity 'Fareshare' to avoid food wastage. Donations are also welcomed from anyone wishing to support our work. The weekly event has proved popular and now extends to Saturdays as well.

The Hub has become a very useful facility for the local community and visitors to the region. We also welcome community groups to make use of the Hub at quieter times. Special thanks go to South Western Railway and East Hampshire District Council who provided the majority of the funding that made The Hub possible.



Rowlands Castle Station

The main station building at Rowlands Castle (very similar to that at Liphook) is of the architectural 'cottage style' design common to the line, and is Grade 2 listed. The station is located on a tightly curved section of track. At the time the line was built, the local wealthy land owner, the Earl of Bessborough, insisted that the railway skirted the edge of his land as much as possible, rather than take a straighter and more direct course through it. The ornate twin-arched brick road bridge just to the south of the station was another of his conditions of allowing the railway pass through his estate. The station once had a small goods yard, but this closed in 1961. There was also a siding owned by the Associated Brick & Tile Company which served the local brickworks a little to the south of the station, but this was taken out of use in May 1964. Today, the station plays a vital part in community life.



Walks Information

1. Hangers Way 21 miles/33km www.hants.gov.uk/thingstodo/countryside/walking/hangersway Queen Elizabeth Country Park to Alton. OS Explorer maps OL8 and OL33. Nearest station **Petersfield**.

2. Staunton Way 20 miles/32km www.hants.gov.uk/thingstodo/countryside/walking/stauntonway Queen Elizabeth Country Park to Langstone Harbour. OS Explorer map OL8. Nearest station **Petersfield**.

3. South Downs Way 100 miles/160km <http://southdowns.gov.uk/enjoy/south-downs-way/> This long distance walk covers the length of the South Downs National Park from Winchester to Eastbourne. It passes through the Queen Elizabeth Country Park. OS Explorer map OL8. Nearest station **Petersfield**.

4. Shipwrights Way 51 mile/ 82km www.hants.gov.uk/thingstodo/countryside/walking/shipwrights Starts at Bentley Station and ends in Portsmouth, passing close to our four stations along the way. Divided into 12 sections, to allow walkers to sample shorter parts of the entire walk. OS Explorer maps OL8 and OL33. Nearest stations **Liphook, Liss, Petersfield** and **Rowlands Castle**.

5. Sussex Border Path www.sussexborderpath.co.uk Follows the county boundary using existing paths, duplicates sections of the Staunton Way, and passes close to Stansted Park, Rowlands Castle, through QECP, then to the east of Liss and Liphook. OS Explorer maps OL8 and OL33. Nearest stations **Rowlands Castle, Liphook** and **Liss**.

6. Monarchs Way 615 miles/989km www.westsussex.info/walking A very long distance path. It passes through Rowlands Castle and Stansted Park. OS Explorer map OL8. Nearest station **Rowlands Castle**.

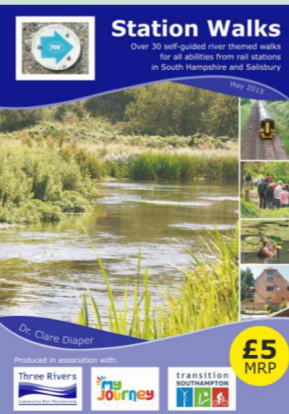
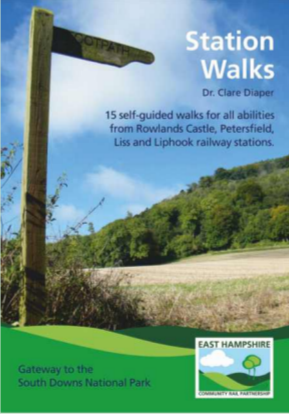
Cycling Information

7. Serpent Trail 64 miles/103km <http://www.southdowns.gov.uk/get-active/on-foot/serpent-trail> A winding route joining up heathland areas that starts at Haslemere station. Can be accessed from stations at **Liphook, Liss** and **Petersfield**. OS Explorer map OL8.

Station Walks Guides

This 70-page book featuring 15 self-guided walks from Rowlands Castle, Petersfield, Liss and Liphook railway stations is full of information for the walker with maps, transport links, photographs and facts. Just **£3.99**. Order via email, or phone us on 07900 103296 for a copy, while stocks last.

For 30 self-guided walks from **Three Rivers Community Rail Partnership** stations in South Hampshire and Salisbury, you can order our Station Walks book for that area. Just **£5**. Order via email, or phone us on 07900 103296 for a copy, while stocks last.



Cycling Information

Cycle routes:
The Shipwrights Way www.hants.gov.uk/thingstodo/countryside/walking/shipwrights Connects each of the East Hampshire Community Rail Partnership railway stations using a combination of rights of way and on-road. Mountain bike recommended.

South Downs Way <http://southdowns.gov.uk/enjoy/south-downs-way/> National Trail and bridleway that can be accessed at Queen Elizabeth Country Park. Mountain bike recommended.

Petersfield to Queen Elizabeth Country Park Cycle Route Mainly off-road asphalt surfaced. Suitable for any bike.

Cycle Trails:
Alice Holt 0300 067 4448 www.forestry.gov.uk/aliceholt

Queen Elizabeth Country Park 023 9259 5040 www.hants.gov.uk/thingstodo/countryside/qecp

Staunton Country Park 023 9245 3405 www.hants.gov.uk/thingstodo/countryside/staunton

Bike Repairs:
Owens Cycles Petersfield 01730 260446 www.owenscycles.co.uk

Cycleworks Petersfield 01730 263370 <http://cycleworks.co.uk/>

Bike Hire:
Meon Springs East Meon 01730 823134 www.meonsprings.com

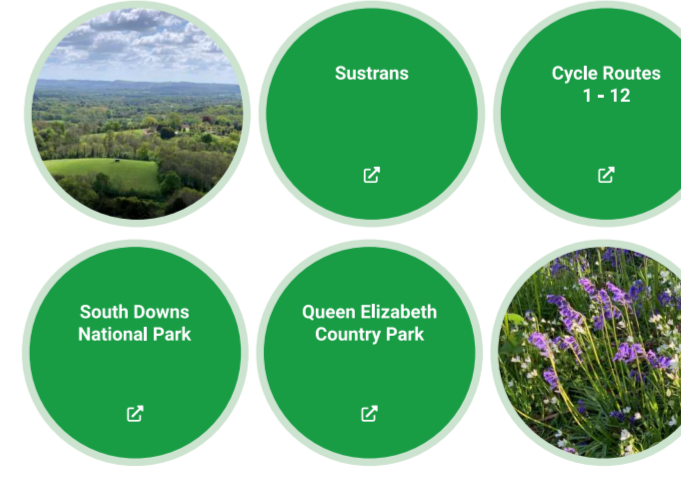
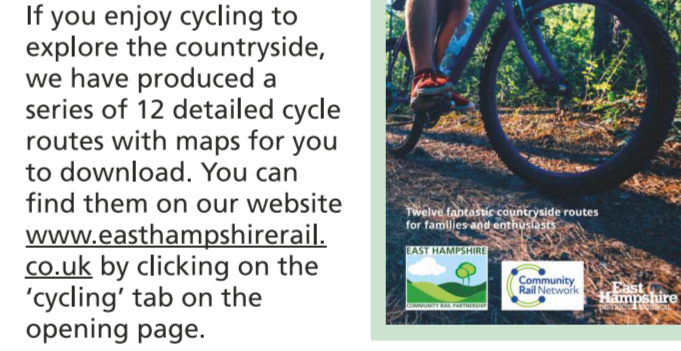
Alice Holt Farnham 01420 521297 www.forestryengland.uk/alice-holt-forest-cycling-and-mountain-biking-trails-alice-holt

See **13**. on map. www.easthantsrail.co.uk



East Hampshire Community Rail Partnership Cycling guides:

If you enjoy cycling to explore the countryside, we have produced a series of 12 detailed cycle routes with maps for you to download. You can find them on our website www.easthampshirerail.co.uk by clicking on the 'cycling' tab on the opening page.



Visiting the South Downs National Park by rail



- **Train Information**
- **Bus Links**
- **Station histories**
- **Local History**
- **Places to visit from the stations**



www.easthampshirerail.co.uk

How you can help

- Join the East Hampshire Community Rail Partnership stakeholder or voluntary groups.
- Help with, or sponsor, improvements to a station.
- Provide a service, business or promotion at a station.
- Provide or help to look after flowers and planters at stations.
- Assist with passenger surveys, events, art projects and promotions.
- Improve access to or from stations via bus, cycle, walking or car sharing initiatives.
- Keep stations free of litter and rubbish.
- Organise or lead guided walks and cycle rides from each station.
- Help 'keep an eye' on stations in the evening or at weekends (Stationwatch).
- Report any damage, or anti-social behaviour.
- Volunteer at our Petersfield Information Hub and Free Shop.

and much more...

Please speak to a member of the partnership or contact us for further information about how to help.

For further information:

- Visit www.easthampshirerail.co.uk
- Find out more on our Facebook page www.facebook.com/easthampshirerail
- E-mail info@easthampshirerail.co.uk
- Phone 07900 103296
- Look out for publicity in the local media.
- Follow us on www.twitter.com/easthantsrail

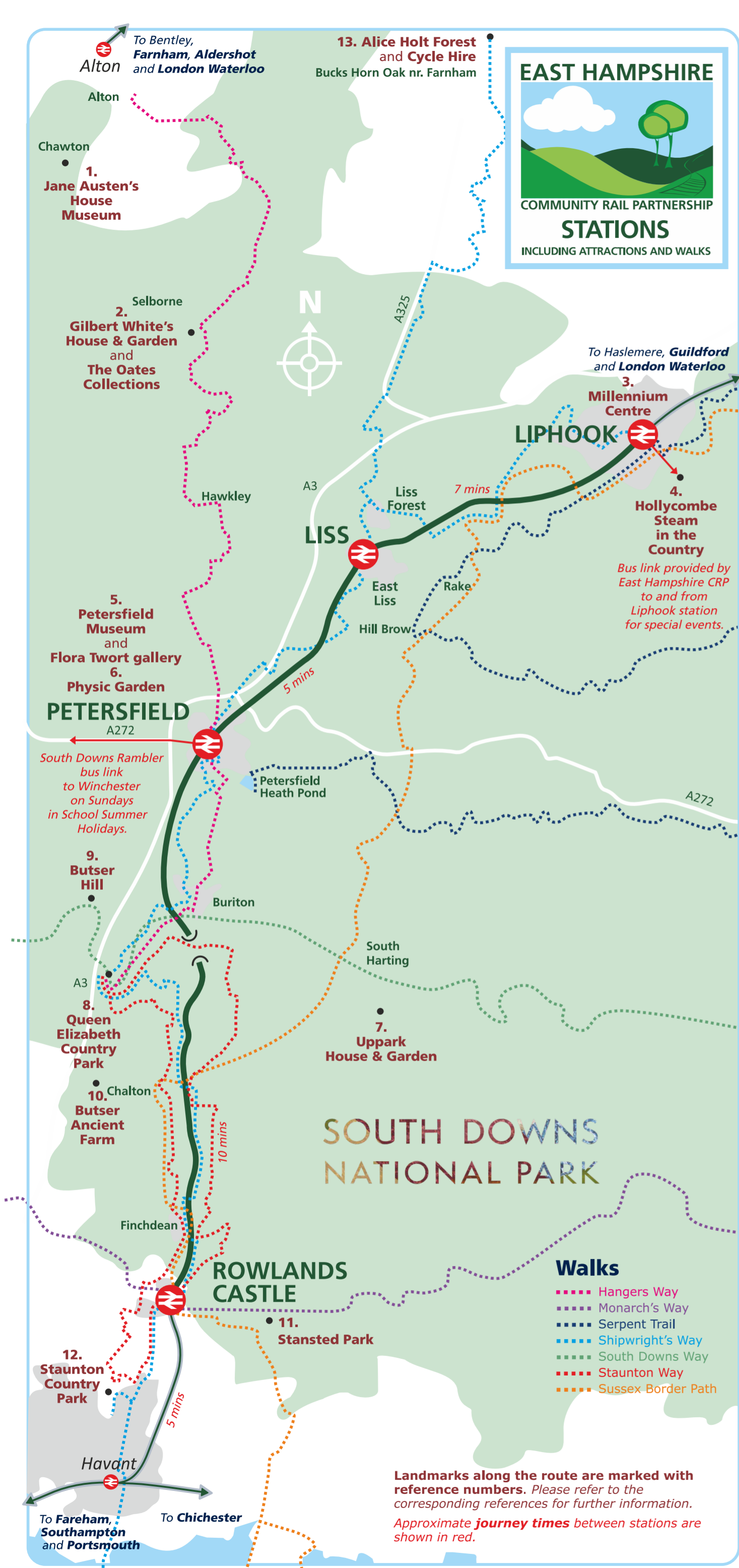


www.easthampshirerail.co.uk

www.facebook.com/easthampshirerail

www.twitter.com/easthantsrail





Liphook

There are written mentions of 'Liphook' as far back as 1281. The village grew up as a stopping point on the coaching route from London to Portsmouth. It was mentioned in 1668 by Samuel Pepys in one of his famous diaries. Travel by road in Pepys' time was a very dangerous thing. In addition to natural hazards such as rain, cold, mud and snow - armed highwaymen on horseback operated in the area and would often attack travellers in the many remote and wild locations.

Liss

The village of Liss appears in the Domesday book in 1086 as 'Lyss', and the name comes from the Celtic meaning 'important building, court or hall'. A settlement here dates back to Roman times, and before that, the Bronze Age. Today, the village comprises two parts - the older area of West Liss, and the newer Victorian settlement of East Liss, which has grown up around the railway station. The river Rother forms a boundary between the West and East parts. A third area of settlement lies a little to the north called 'Liss Forest'. This is a later development established by the military. Agriculture played a major part in the life of this rural village for many generations. In the nineteenth century it became known for the production of peppermint, an industry sponsored by the Money-Coutts family of Stodham Park. The mint was grown, distilled and sold at four pence a pint. The 'bounds', or boundaries, of the parish were apparently beaten (ceremonially defined) annually during the Victorian period. Records suggest that a small boy was traditionally put in the oven of the Flying Bull Inn, as the parish boundary was believed to pass through the kitchen of the inn. The village is on the fringes of the Woolmer Forest

area which has a long history of use by the military. In 1907 what went on to become known as the Longmoor Military Railway was opened. Liss was its southern most point, and the remains of the old station platform can still be seen today. This marks the start of a woodland footpath and bridleway along part of the old line, now part of the 'Shipwrights Way' walk.

Petersfield

The market town of Petersfield is located just north of the South Downs hills, and was founded in the 12th century. Its location at the crossing point of two well used main roads, led to its steady growth. One route became today's A3, which since 1992 now by-passes the town, and the other is the A272. Sheep farming and the associated wool trades, plus cattle farming and the leather and cloth trades, all played a major role in the town's prosperity. Petersfield remains a busy town, and its weekly markets are held in the main square, under the statue of King William III - William of Orange. The last livestock market was held in 1962, but as a reminder of Petersfield's farming heritage, a statue of a shepherd by local sculptor Andrew Cheese was installed in Rams Walk in 1998 (right). Located south of the town centre is Heath Pond. This 'pond' is actually a large boating and fishing lake. This covers 22 acres, and is set in Heath Common, which covers over 60 acres. Small pleasure boats are available for hire, and fishing is also permitted. An annual event called the Taro Fair is held here on 6 October each year, but not if that date falls on a Sunday! This large area of water attracts a good number of types of wildfowl, and it is a popular spot with locals and visitors of all ages. Heath Common contains 21 Bronze Age 'barrows' or burial mounds, making it one of the most important locations for such features, and gives it Scheduled Ancient Monument status.

Places to visit

- Jane Austen's House Museum**
Chawton, Alton, Hants. GU34 1SD. 01420 83262 <https://janeaustenshouse.com>
This fascinating museum is located in the house which was the home of the famous author from 1809 until 1817. Here she wrote Mansfield Park, Emma and Persuasion. The late 17th century house is furnished and contains many objects owned by Jane and her family. The Museum Shop has a large selection of books and souvenirs. Events are held throughout the year. Buses on route 38 run from Liss and Petersfield to Chawton on weekdays (see overleaf).
- Gilbert White's House & Garden and The Oates Collections**
The Wakes, High Street, Selborne. GU34 3JH 01420 511275 www.gilbertwhiteshouse.org.uk
Gilbert White, a keen naturalist, wrote the now famous book 'A Natural History of Selborne' in 1789. His house and its 30 acres of gardens and parkland have been carefully restored to their original condition. There is also a gift shop and tea parlour. Captain Lawrence Oates was part of Scott's team who explored the Antarctic. There are displays of photographs and artifacts of the expedition at Gilbert White's House. Lawrence's uncle Frank was keen on natural history, and there are displays of various specimens he collected on his travels. Buses on route 38 run from Liss and Petersfield to Selborne on weekdays (see overleaf).
- Millennium Centre**
Heritage Centre on 1st floor. Ontario Way. GU30 7LD 01428 723889 www.bramshottandliphook-pc.gov.uk/millenniumcentre
Open Mon - Thurs 1000-1400, Fri 1000-1300. Closed Bank Holidays.
- Hollycombe Steam in the Country**
Iron Hill. GU30 7LP 01428 724900 www.hollycombe.co.uk
This working museum - the largest of its kind in Britain - features a wonderful collection of steam powered fairground rides, railway locomotives, road vehicles, machinery and other exhibits. Please note: Closed during the winter months.
- Petersfield Museum**
St. Peter's Road. GU32 3HX 01730 262601 www.petersfieldmuseum.co.uk
The museum, located in the flint and brick faced former county police station building, is undergoing redevelopment during 2020. Special events and activities are being held throughout the year, so please check the website for details. When fully open, the museum exhibits items from the social and industrial past of the town, and there are special exhibitions on display throughout the year. The **Flora Twort gallery** displays many of the watercolour and pastel works from the former studio of local artist Flora Twort. The museum also houses items from the **Bedales Historic Costume Collection**. The clothes and props were used in plays put on by the pupils of nearby Bedales School, and are now very valuable authentic historic examples.

Rowlands Castle

The advent of the railway brought greater prominence to Rowlands Castle, but in its day nearby Finchdean was a much larger settlement, and a base for agricultural machinery manufacturing. Its pub The George Inn remains and is within walking distance of St Hubert's Church, Idsworth, a little further north. Parts of 'the little church in the field' date from the 12th Century and it features 14th Century wall paintings and a Millennium Mural. The origin of 'Rowlands' in the village name is unclear but it may be a corruption of a Celtic word. The 'Castle' played host to Henry II in the 12th Century but only a motte and bailey remains now in the private grounds of Deerleap House. The plentiful supply of clay means the area has been known for brick and tile-making since Roman times; a brickworks established in the village in the 1800s was a major employer before closing in 1968. Rowlands Castle now boasts a number of pubs, a café and various other shops, as well as reputedly the largest village green in Hampshire. The Robin Hood Inn was formerly The Railway Inn, and The Castle Inn stands roughly on the site of the previous White Hart Inn, a haunt for smugglers operating along the south coast, including the infamous Hawkhurst Gang in the mid-18th Century. There are two attractive churches - the Church on The Green (right) and St John's Church at the southern end of Redhill Road. At the end of the St John's churchyard is the village's War Memorial, and north along Manor Lodge Road is the King's Stone where George VI stood as troops paraded past in 1944 before departing for D-Day. The proximity of its station meant that Rowlands Castle was ideal for accommodating the build-up of troops and munitions in the area, with many stationed in the woods surrounding the nearby Stansted Estate. Now a gateway to the South Downs National Park, visitors can enjoy the village and its surrounding countryside via its many rights of way, and by accessing the longer distance Shipwrights Way, Staunton Way and the Monarch's Way.

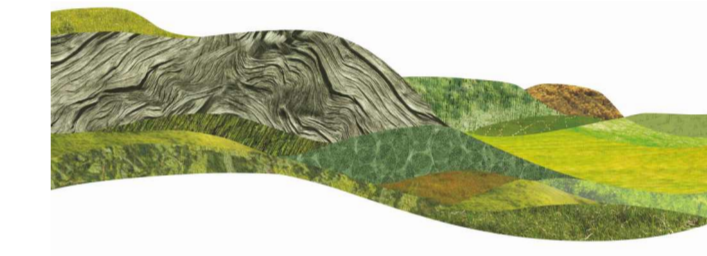


Butser Hill

South Downs National Park

The South Downs National Park living landscape stretches from the rolling hills of Hampshire to the iconic white cliffs of East Sussex. The South Downs National Park forces you to think big. But you also need a narrower focus to uncover the patchwork of experience and opportunity that runs through its paths, hillsides and in the hearts of its communities. Our National Park is a place to explore and interact with, a National Park that rewards with real experiences of places lived and worked, and countless hidden gems waiting to be discovered. It is a place to grow your business, to exhaust your sense of adventure or simply enjoy the space of its rolling hills and expansive views. Connect the dots, the beacons and the highlights for a richer experience, a personal story, and to make a contribution to its enduring legacy.

www.southdowns.gov.uk



SOUTH DOWNS RAMBLER

EXPLORE the South Downs Way by Bus

This summer Sundays bus route is funded by the East Hampshire and Three Rivers Community Rail Partnerships and CrossCountry Trains. Operated by Bluestar, it offers the chance to explore rural Hampshire in a relaxed and sustainable way. If you are looking for breath-taking views, visible prehistory, fine pubs and pretty villages with easy access to the South Downs Way and rail links at Winchester and Petersfield - the South Downs Rambler is the Sunday bus route for you! The bus takes the scenic route from Winchester station to Petersfield station and back again via the Science Centre and Planetarium at Winchester, views at Cheesefoot Head, gardens of Hinton Ampner, Iron Age fort at Old Winchester Hill, luxurious Langrish House Hotel and traditional village pubs. You don't need to pre-book, and all the usual passes and concessions apply. Single and return fares are available from any point along the route. **Visit our website for more information** <https://easthampshirerail.co.uk/leaflets/>



About us



Part of the Hampshire Community Rail Partnership, the **East Hampshire Community Rail Partnership** is a 'not for profit' organisation which provides a link between the railway industry and local communities. Partners can include any individual, business or organisation aiming to positively develop the local rail route and stations. This includes practical initiatives to improve station facilities, services and access, enhance integration with other forms of transport and create a better, more sustainable local railway. Stakeholders and partners in the East Hampshire Community Rail Partnership include: South Downs National Park Authority, South Western Railway, East Hampshire District Council, local Parish Councils, and Community Rail Network (was ACoRP). Anyone else who wants to positively develop the local rail route and stations can of course join us!

The Partnership aims to focus on the four rail stations which are central to the East Hampshire area of the South Downs National Park. With their prime locations, the stations are being developed as 'key gateways' to encourage more travel to the National Park by train, and to enable improved onward travel exploration by foot, cycle or bus.

Community HUB
Your Railway - Our Community

SCAN LOGO

TO SEE VIDEO

Download the XC Community Hub app from the App Store or Google Play.

Scan the East Hampshire CRP logo above to trigger a video about us.

EAST HAMPSHIRE

COMMUNITY RAIL PARTNERSHIP

Liphook

Artisan and Community Market - Monthly.
3. Millennium Centre (Heritage Centre on 1st floor). Ontario Way. GU30 7LD 01428 723889 www.bramshottandliphook-pc.gov.uk/millenniumcentre
Open Mon - Thurs 1000-1400, Fri 1000-1300. Closed Bank Holidays.

Petersfield

Market Days - Wednesdays and Saturdays.
Farmers Market - 1st Sunday of each month.
5. Petersfield Museum
St. Peter's Road. GU32 3HX 01730 262601 www.petersfieldmuseum.co.uk
The museum, located in the flint and brick faced former county police station building, is undergoing redevelopment during 2020. Special events and activities are being held throughout the year, so please check the website for details. When fully open, the museum exhibits items from the social and industrial past of the town, and there are special exhibitions on display throughout the year. The **Flora Twort gallery** displays many of the watercolour and pastel works from the former studio of local artist Flora Twort. The museum also houses items from the **Bedales Historic Costume Collection**. The clothes and props were used in plays put on by the pupils of nearby Bedales School, and are now very valuable authentic historic examples.

6. Physic Garden

16, High Street (opp. M&S). GU32 3JJ 01730 233557 www.petersfieldphysicgarden.org.uk
A 17th century walled herb garden, hidden away behind the activity of the busy High Street.

7. Uppark

South Harting, Petersfield. GU31 5QR. 01730 825415 www.nationaltrust.org.uk/uppark-house-and-garden
This beautifully restored 17th century house is owned by the National Trust. Perched high on the South Downs, the house and grounds offer views for miles around.

The author H.G. Wells had connections to Uppark, as his parents were employed on the staff for many years. Buses on route 54 run from Petersfield to Uppark on Mondays to Saturdays (see overleaf).

8. Queen Elizabeth Country Park

023 9259 5040 www.hants.gov.uk/thingstodo/countryparks/qecp
Queen Elizabeth Country Park with its chalk hills, beech woodland and pine forest is south of Petersfield and is situated within the South Downs National Park. The Hangers Way footpath goes from Queen Elizabeth Country Park to Alton via Buriton and Petersfield. Buses on route 37 call near to Queen Elizabeth Country Park (see overleaf).

9. Butser Hill

(271 metres high) on the South Downs Way is a National Nature Reserve with stunning views.

10. Butser Ancient Farm

023 9259 8838 www.butserancientfarm.co.uk
This archaeological and educational open-air museum in Chalton near Petersfield has recreated examples of Stone Age, Iron Age, Roman and Saxon homes and living.

Rowlands Castle

11. Stansted Park
Havant. PO9 6DX 02392 412265 www.stanstedpark.co.uk
This wonderful house and gardens, approx. 1.5 miles from the station, is set on the edge of the 1800 acres of Stansted Forest. Keats stayed here and some of his poems were inspired by the location. The house is closed to the public over the winter period, but the grounds remain open all year.

Havant

12. Staunton Country Park
Middle Park Way, Havant. PO9 5HB. 023 9245 3405 www.hants.gov.uk/things-todo/countryparks/staunton
This attraction which is open all year covers an area of 1000 acres of parkland and forest. There is a Visitor Centre with farm animals, a maze, attractive gardens, a large area of ornamental Victorian glasshouses and a Rainforest Experience feature. **There is an admission fee to the Visitor Centre - please see the website for current prices.** Route 27 buses call outside the entrance (see overleaf).